




Forest of Avon Plan 2026-2050

Growing together and shaping our future:
A Tree and Woodland Strategy for the West of England



Contents

Introductions	
The Forest of Avon Plan	4
About Forest of Avon	5
England's Community Forests Partnerships	6
Partnerships	7
Context	
National Policy	9
Local Policy	10
Why trees?	11
Vision and targets	
Vision	14
Forest of Avon canopy cover	15
Strategic targets	16
Targets to 2050	17
Priorities	18
Delivery	
Principles	22
Programmes	23
People and Trees	24
Case studies	25
Funding and finance	27
Monitoring and evaluation	28
Next steps	30
Priorities by area	31



Introductions



The Forest of Avon Plan

The Forest of Avon Plan: A Tree and Woodland Strategy for the West of England (including North Somerset) was endorsed by the West of England Nature Partnership (WENP) in summer 2021. This includes the West of England Combined Authority (WECA) and the 4 local Unitary Authorities.

Since then a great deal has been achieved across the region for trees and woodlands but there is still much to do to achieve our goals to 2030 and then to 2050.

The Plan targets are about creating the best environmental conditions for the region, where trees, woodlands and mosaic habitats can thrive, improving our economy, quality of life and abundance of species.

Having delivered the original Plan's 5 year action plan, this update presents a forward look for 2026 to 2050, with the aim to create the next 5 year action plan by June 2026.

The Plan was produced by Forest of Avon, in collaboration with WENP in response to the

Joint Green Infrastructure Strategy (JGIS) actions. WENP is a cross-sector partnership working to restore the natural environment in the West of England through embedding nature in high-level decision-making across the region's spatial planning, public health and economic development.

Our Plan is about creating the best environmental conditions where trees, woodlands and habitats can thrive.

Woodland creation is at its highest levels in 20 years, with the UK Climate Change Committee having released a report in 2025 recommending a further 'ramp up' of tree establishment.

With a Government pledge of a further £812 million for tree and woodland creation to 2030 and strong public and landowner support, the case is clear. Local statistics consistently show strong public support for trees. In Bristol, more than 90% of residents surveyed say they want more of them. The announcement of the Western Forest, England's newest national forest led by the Forest of Avon and backed by Government Ministers, reached an estimated 10 million people, with over 500 press pieces and a whopping global reach of 2.5 billion people!

About Forest of Avon

For over 30 years, the Forest of Avon has supported and enabled local communities to protect, expand and enjoy tree and woodland cover across the region.

Forest of Avon is the community forest for Bristol, Bath and North East Somerset (BANES), South Gloucestershire and North Somerset. This includes both rural canopy (for example on farms, fields, woodlands and riversides) and urban sites (such as parks, residential streets, schools, and city centres).

With over 1.2 million trees already planted, the Forest continues to grow each year – helping to create healthy, resilient places where people and nature thrive.

Our remit includes tree planting through the Trees for Climate scheme, woodland management, orchard care and nature-based health activities for people facing barriers to accessing local woodlands. With over 1.2 million trees already planted, the Forest continues to grow each year, and aims to help create healthy, resilient places where people and nature thrive.

This is made possible through strong, collaborative partnerships, including Local Authorities, environmental charities, community groups, schools, businesses, farmers and landowners. By expanding and managing treescapes, we are connecting people to nature through community-led projects, whilst also reducing flood risk, improving air and water quality and creating vital habitats for wildlife.



England's Community Forests

The Forest of Avon is one of England's Community Forests, growing since the 1990's to a network of 15 in 2025.

This network is England's largest environmental regeneration programme and is establishing 37% of Government funded woodland creation as of 2025. The community forests deliver directly and offer advice and support to landowners and communities for planning, funding and planting trees - bringing significant social, environmental and economic benefits to both urban and rural areas.

England's Community Forests are delivering 37% of all Government-funded woodland creation - unlocking countless gains for people and planet.

Recognised in national policy, such as the National Planning Policy Framework and the Government's 25 Year Environment Plan, England's Community Forests play a

key role in shaping woodland creation and nature recovery across the country. We work together to support each other and amplify our voice nationally. With tens of millions of trees planted, across the network, countless woodlands enhanced and new access routes opened across the country, our positive social and environmental impact is undeniable.

Adapting to both national and local challenges, England's Community Forests provide a long-term commitment towards ensuring that trees and woodlands are at the very heart of communities up and down the country, unlocking countless gains for people and planet.

For further information, see [England's Community Forests](#)

Core aims of the ECF network



Regeneration and growth
Attract investment, create jobs, and improve urban environments.



Community support
Engage locally to improve lived-in areas and boost wellbeing.



Better places
Enhance biodiversity, recreational facilities, and climate resilience.



Partnerships

At the Forest of Avon, and as part of England's Community Forest network, we do everything in partnership.

Collaboration ensures every tree is planted in the right place, creating lasting impact across the Forest of Avon.

This might be working with private, public or voluntary sector organisations, set within the local communities. Such teamwork, across the region, lends expertise, credibility and accountability to all we do.

It is through collaboration that we increase the impact, scale and efficacy of every project, enabling us to plant the right tree in the right place.

The aspiration for this coordinating Plan therefore draws upon the strategic, partnership-based approach of the Forest of Avon. Key advisory partners include those who make up the West of England Tree and Woodland Strategy Group, as well as those who helped resource and support the evolution of the Plan.

Regulatory and Government bodies

- Defra
- Environment Agency
- Forestry Commission
- Natural England

National Landscapes (formerly AONBs)

- Cotswolds
- Mendip Hills

Infrastructure organisations, including

- Bristol Water
- NHS
- Wessex Water

Environmental Partnerships

- Bristol Avon Catchment Partnership
- West of England Nature Partnership

Authorities and Councils

- Parish Councils
- Bath and North East Somerset Council
- Bristol City Council
- North Somerset Council
- South Gloucestershire Council
- West of England Combined Authority

Charities and NGOs, including

- Avon Needs Trees
- Bristol Avon Rivers Trust
- Bristol Dementia Wellbeing Service
- National Trust
- Second Step
- Wildlife Trusts
- Woodland Trust

Community and climate action groups

Large landowners

Context



National policy

This Strategic Plan is shaped by national, regional, and local policy, and has been developed within the context of the existing policy framework at the time of writing.

These include:

- The Environmental Improvement Plan (2023), which was the first revision of the 25 Year Environment Plan. It sets out the target to “increase tree canopy and woodland cover from 14.5% to 16.5% of total land area in England by 2050”.
- The Net Zero Strategy (2021), which sets out policies and proposals for decarbonising all sectors of the UK economy to meet the net zero target by 2050.

This Strategic Plan is the approved Community Forest Plan for the Forest of Avon area, aligning local action with national goals.

The National Planning Policy Framework sets out the Government’s planning policies for England and how these are expected to be applied. It states that “an approved Community Forest Plan may be a material consideration in preparing development plans and in deciding planning applications”.



Local policy

The Forest of Avon works to deliver various local policies and partnerships:

- Local Nature Recovery Strategy, driving landowner engagement.
- Local Plans, informing Unitary Authority priorities.
- The UK has committed to protect 30% of land and sea for nature by 2030 (30by30), to support the global target agreed at the UN Biodiversity Summit (COP15) in 2022. This commitment is enshrined within the Government's 2023 Environmental Improvement Plan and presents an important opportunity to demonstrate the UK's international leadership on nature.
- National Planning Policy Framework as it applies to local planning decisions.
- The Forest of Avon partnership meets quarterly and has held a strong influence on tree strategy and delivery, driven primarily through the West of England Nature Partnership Tree and Woodland Strategy Group forum.
- The Forest of Avon, working with key local partners, will support the statutory purposes of the protected landscapes in our area. We will do this by ensuring our activities contribute to the conservation and enhancement of their natural beauty and special qualities, and help achieve the goals set out in their Management Plans.
- The West of England Nature Partnership's Strategic priorities reflect the Forest of Avon Plan goals.
- All of the authorities endorse the Plan. They also have their own Local Plans which are similarly intended to reflect the balance of land use priorities.
- The plan aims to complement different geographical priorities to achieve the collective goals of the region.



Why trees?

Through the Trees for Climate grant programme the Forest of Avon has improved many local priority areas within the region over the last five years.

- **Reduced flooding:** We have planted over 400ha of new woodland, sequestering over 2,500 tonnes of carbon per year; 150ha have been within the Environment Agency's high priority zone for natural flood management.
- **Health benefits:** Forest of Avon has created 80 sites with public access. England's Community Forests nationally have given 182,897 households access to a woodland where they were previously failing the woodland access standard. Trees for Climate sites are expected to receive 3,924,961 visits annually, with an estimated welfare benefit of over £13 million.
- **Protecting biodiversity:** Tree planting in year 5 of the Trees for Climate scheme nationally is predicted to provide an additional 130–310 ha of usable habitat for woodland species, depending on each species' dispersal ability (short, medium or long). These figures illustrate the potential for Forest of Avon planting to improve the connectivity of woodland habitats and wider ecological networks.



Greener, cooler urban spaces

Tree canopies provide shade, cooling the air, whilst reducing noise pollution by acting as natural sound barriers. They make cities more liveable, attractive and healthy - creating safer, stronger communities.

Air and water

Trees absorb airborne carbon and pollutants. They also help dissipate rainwater, improve local water quality and, through increased water uptake and drainage, reduce flood risk by up to 40%

Thriving plants and wildlife

Trees create key, connected habitats and food for diverse species like birds, bats, butterflies, and fungi. Protecting and planting them helps create and restore important ecosystems.

Mental health and wellbeing

Time spent amongst trees can reduce stress, anxiety, and depression. Amazingly, trees can also enhance mood, boost immune function, and improve both our cognitive skills and recuperation times.

For more information: [Why is our work important - England's Community Forests](#)

Sustainable food production

Planting trees on farms boosts food production by protecting crops and animals, reducing soil erosion, providing forage and lowering the need for chemicals.

Recreation and employment

Trees create jobs in planting and care, while enhancing parks and trails which boost tourism and community wellbeing. Wooded spaces encourage vibrant communities and more opportunities for everyone to enjoy nature.

Sustainable local timber and wood products

Diverse native woodlands can supply timber and products like nuts, willow wands and venison, thereby reducing imports, boosting the local economy, and keeping forests healthy for the future.



Vision and targets





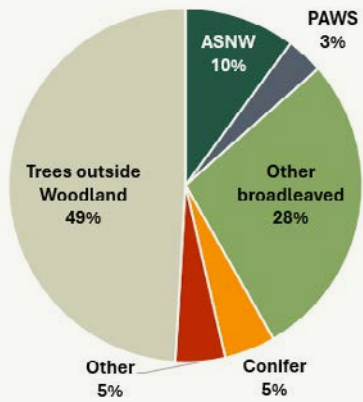
Vision

Our vision is for more, better-managed and connected trees and woodlands – making a vital contribution to a thriving natural environment, society and economy.

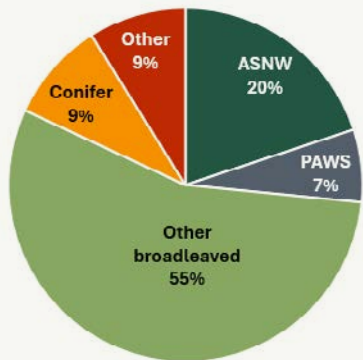
- Building on our history of collaboration and successful project delivery, we have an aspirational aim to double the Forest of Avon's tree and woodland cover – including open wooded landscapes and mosaic habitats.
- Delivering this vision will provide significant benefits to the region, including an estimated £540+ million worth of carbon sequestration, air quality improvements and hazard regulation. This is in addition to benefits from increasing biodiversity, health and wellbeing, improved water quality and goods and services such as timber and recreation.

Forest of Avon canopy cover

Tree cover by type



Woodland by type



ASNW: Ancient Semi-Natural Woodland
PAWS: Plantation on Ancient Woodland Site

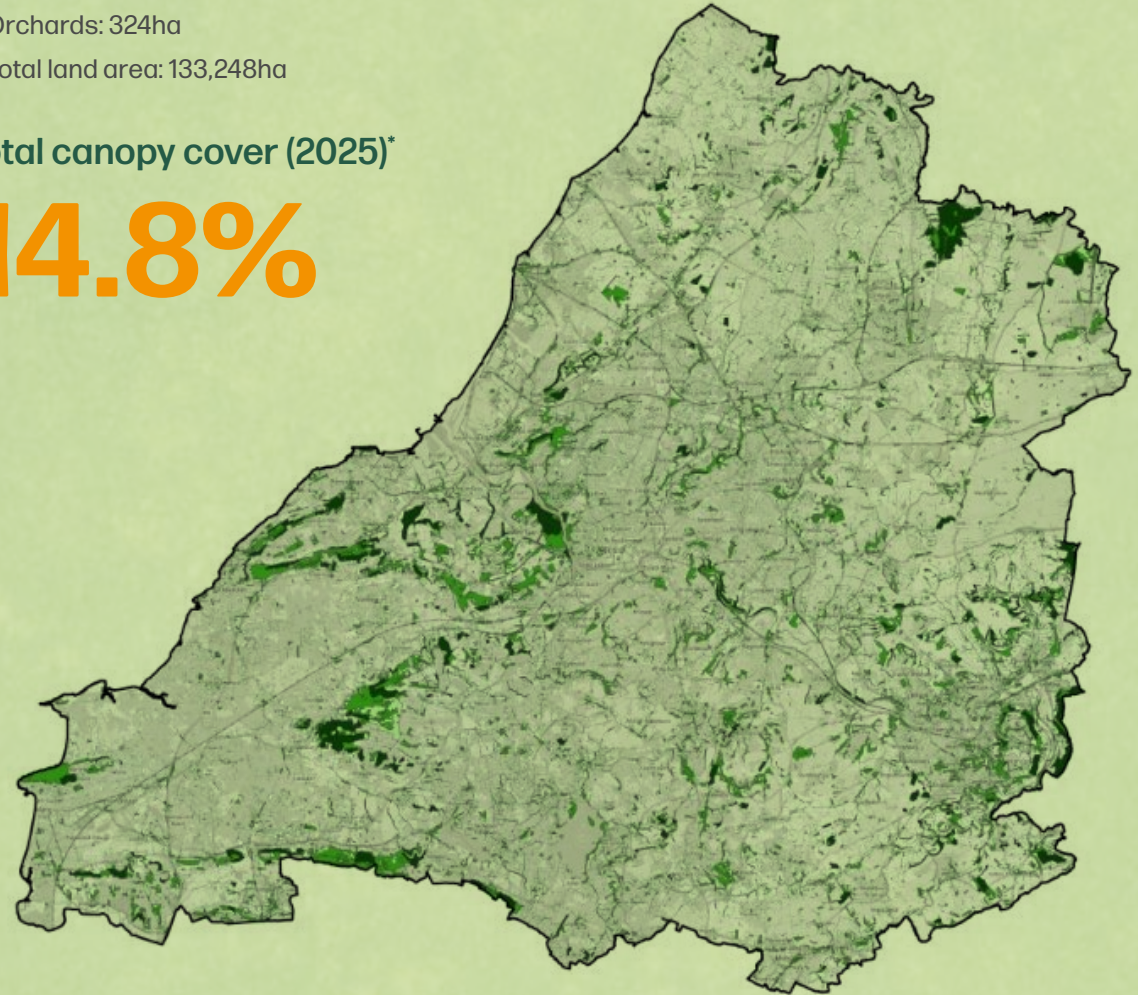
Current canopy cover

(National Forest Inventory):

- Woodland: 10,641ha
- Trees Outside Woodland: 8,750ha
- Orchards: 324ha
- Total land area: 133,248ha

Total canopy cover (2025)*

14.8%



*Figures and maps created in 2025 using most recently available data.

Strategic targets

The Partnership's aspiration set out in this Plan is to double tree and woodland canopy cover across the Forest of Avon, reaching highest tree cover in strategic priority areas.

Working towards this overall long-term ambition, we aim to reach and exceed the Government target of 16.5% canopy cover as soon as possible.

The Forest of Avon aims to reach at least 21.7% tree and woodland canopy cover by 2050.

Our target is to achieve 21.7% canopy cover across the area by 2050. This is likely to include higher percentages in focus and priority areas, whilst other areas will remain at 16.5%. This includes all types of canopy cover including lower density or mosaic woodland and agroforestry.

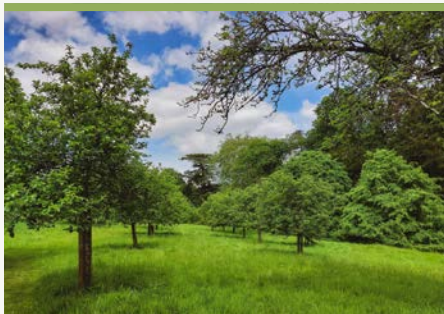
As well as tree and woodland canopy cover, there are key areas of focus which are addressed within the targets set out below.



Targets to 2050

21.7%

circa an additional 9,200ha



Tree canopy cover

Total hectares and percentage of canopy cover across Forest of Avon.

2,500ha

of woodland effectively managed



Woodland management

Additional hectares of woodland sustainably managed and hectares of Forest of Avon and key partner woodland restored.

25,000

people directly engaged



People engagement

Number of people directly engaged in the core work of the community forest and key partners (tree planting, woodland management, other activities).

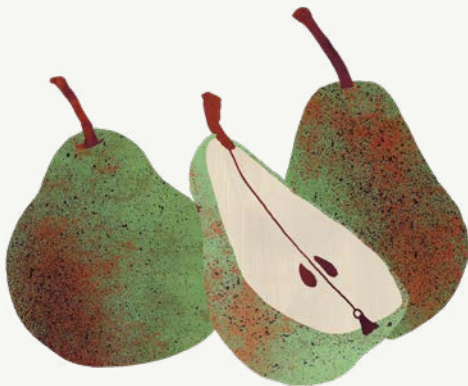
50/50

split of public/private sector funding



Funding resource into trees and woodlands

Funding invested into direct activity across the partnership, percentage split across public and private sector.



Priorities

There is potential across the whole of the West of England to deliver the vision for trees and woodland, and there are certain areas where action is likely to be especially effective.

For example, the West of England Local Nature Recovery Strategy sets out the priorities for recovering nature across the West of England and maps 'focus areas' where action will have the biggest impact.

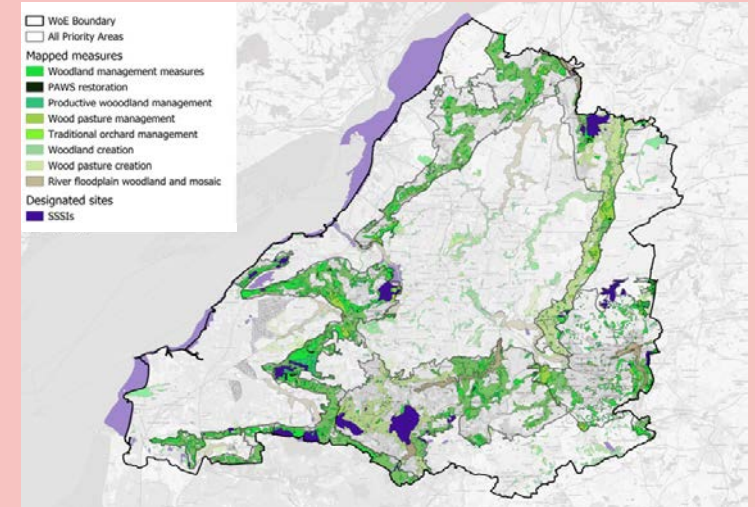
The Forest of Avon Plan has identified Strategic Woodland Areas, in which a focus on woodland creation, expansion and restoration could make key contributions to the West of England's strategic network of woodland.

Lower Woods and Cotswold Scarp

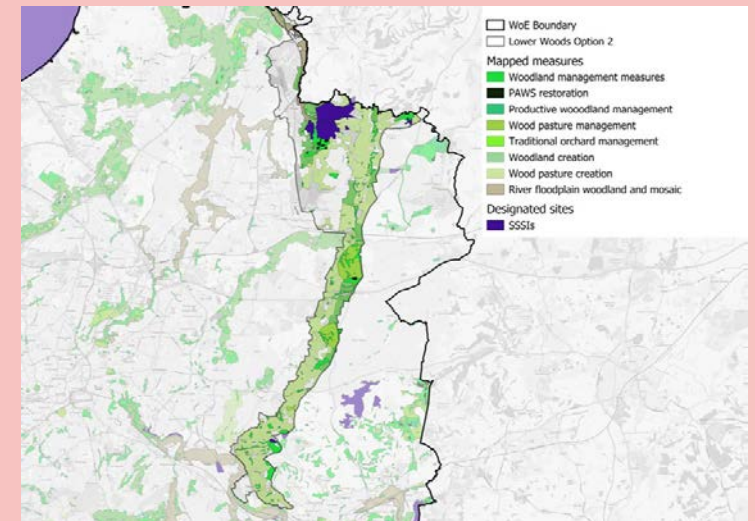
Lower Woods is the largest ancient woodland in the West of England and a vital habitat for rare species like orchids, herb-paris, and butterflies such as the white admiral. Managed by Gloucestershire Wildlife Trust, it's crucial to maintain and enhance its condition to support biodiversity and build resilience to climate change. The Cotswold Scarp plays a key role as a wildlife corridor, connecting Lower Woods (north of Chipping Sodbury) with the Bathscape and wider region, further south.

For more details, please see [Tree and Woodland Priorities by Landscape Area](#)

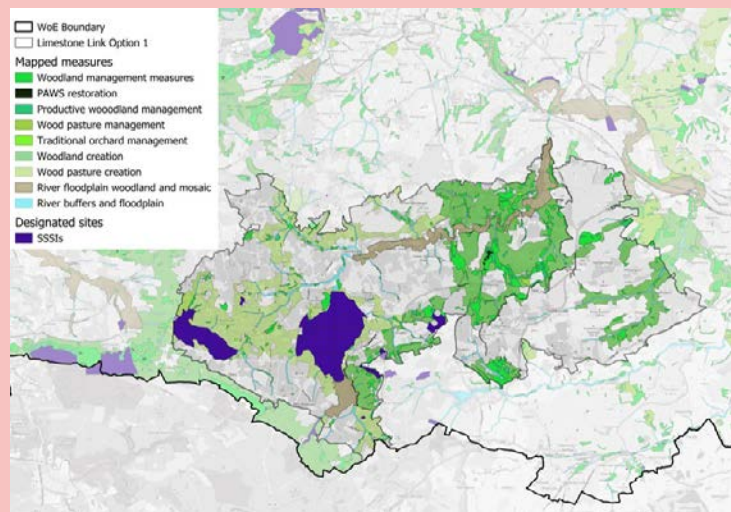
Forest of Avon priority areas



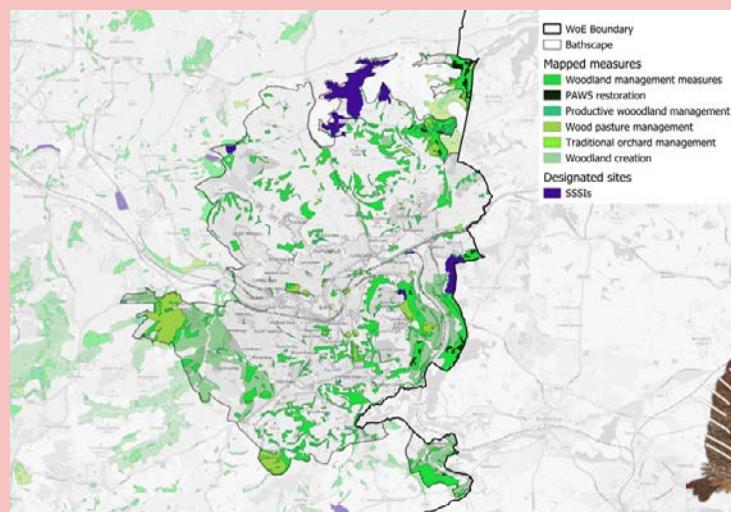
Lower Woods and Cotswold Scarp



Limestone Link, including Chew Valley



Bathscape



Limestone Link, including Chew Valley

Better connecting the Mendip Hills and Cotswolds National Landscapes has long been recognised as a priority for nature recovery in the West of England, including for woodland habitats. The Lower Chew Valley has a particularly high concentration of woodland and ancient woodland (such as Lord's Wood) and hosts scarce woodland species including white admiral and purple hairstreak butterflies. It also includes two sites where large-scale woodlands are being created (Lower Chew Forest and the Great Avon Wood), as well as a landscape recovery scheme focused on increasing tree and woodland cover.*

The Forest of Avon Plan identifies Strategic Woodland Areas where creation, expansion, and restoration can make the biggest contribution to nature recovery and resilience.

Bathscape

Bathscape is the natural landscape surrounding the historic city of Bath, which is a key area for nature recovery in the region due to its concentration of protected sites, species-rich calcareous grassland, mosaic habitats and woodland, as well as the presence of rare species of bats and other priority species. It is a valuable landscape both for wildlife, and for the residents of and visitors to the city.

* The whole of the Limestone Link is not included here, simply the area where the focus is on woodland creation.

North Somerset Wooded Ridges and Plateau

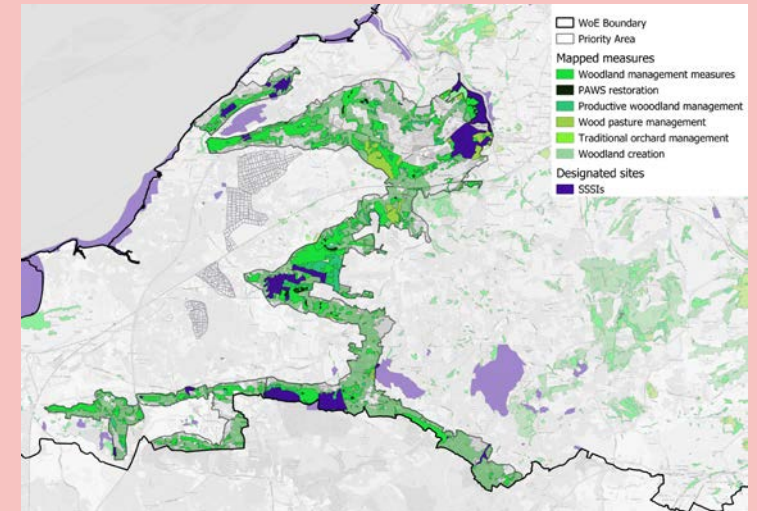
The ridges and plateaus of North Somerset, stretching from Portishead to the north slopes of the Mendip Hills via Failand Ridge and Cleeve Ridge, have the highest concentration of woodland in the West of England, including several ancient woodlands. This is a key area for improving woodland management, and for creating new woodland and open wooded habitats, such as wood pasture - benefitting several important woodland species that are found here, including dormice, woodland butterflies and rare fungi.

South Gloucestershire Ridges

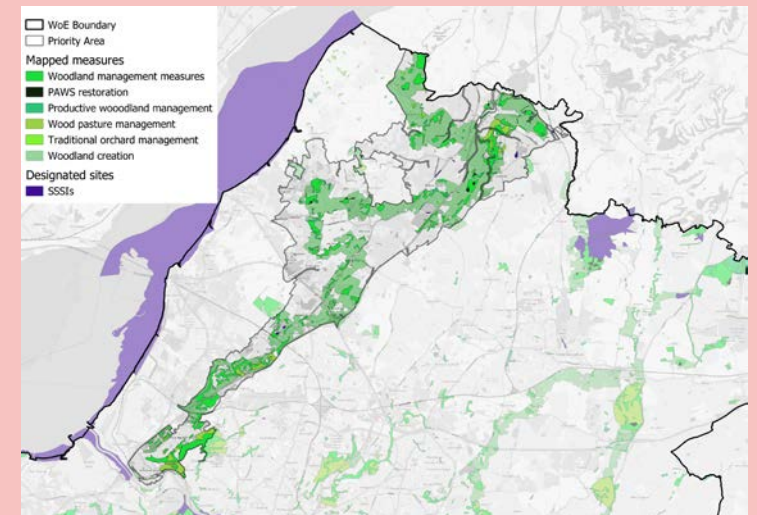
The ridges running through the North West of the region (roughly parallel to the M5) have great potential to create a corridor of woodland, wood pasture and parkland running from north-west Bristol to Gloucestershire. There is already plenty of woodland and wooded habitats along these ridges and in the 'Parkland Vale' around Rockhampton. However, most of these habitats are not well-connected, limiting the ability of woodland species such as dormice to travel through the landscape.



North Somerset Wooded Ridges and Plateau



South Gloucestershire Ridges



Delivery





Principles

Throughout all our work, the Forest of Avon follows certain principles when planting trees, creating new woodland, or managing existing woodland.

These principles are designed to maximise the benefits trees and woodlands provide to both wildlife and people, while respecting and supporting local efforts and objectives. Aligned with existing laws and best practices - such as the Forestry Act 1967, Environmental Impact Assessments and the UK Forestry Standard - these principles include:

- **Ecological networks:** supporting regional biodiversity and wildlife.
- **Climate change:** helping mitigate and adapt to climate change impacts.
- **Natural flood management:** reducing flood risk through strategic woodland placement.
- **Health, wellbeing and culture:** enhancing public health and cultural value.
- **Sustainable woodland economy:** promoting economic benefits from timber and woodland products.
- **Woodland management:** encouraging practices that support all ecosystem services, including controlling pests, diseases, and invasive species.

Every tree we plant supports biodiversity, strengthens climate resilience, reduces flood risk, and enhances people's health and wellbeing.

Programmes

The Forest of Avon Plan focusses on 4 key delivery programmes which will be continued for 2026-2030.

Across the Forest of Avon partnership, there is a much wider range of programmes and projects to include:

- Skills, education and training
- Access and accessibility
- Landscape Recovery and land acquisition for permanence.



Woodland creation

The Forest of Avon delivers Trees for Climate as our primary delivery mechanism for new trees and woodlands, whilst drawing on many other resources across the partnership.



Woodland management and restoration

We seek to ensure that there is active woodland management support for every landowner in the Forest of Avon.



Nature and health

The Forest of Avon delivers expert-led sessions for communities and groups facing barriers, while many other partners also offer woodland activities.



Western forest

Led by Forest of Avon collaborating with Great Western Community Forest and a wide range of partners across the West of England, North Somerset, Wiltshire and Gloucestershire.

People and Trees

Forest of Avon is made for and delivered by people! From volunteers to business leaders, farmers to school pupils, everyone can benefit!

We seek to involve as many people as possible in a wide range of woodland activity, as supported by our goal to engage 1,000 individuals each year by 2050 in meaningful activity.

The health benefits of trees and woodland activity is undisputed. However everyone's experience is individual.

Partners seek to expand knowledge and resources to create more inclusive activity, breaking down barriers and creating experiences which are accessible. These range from hands-on training to employment and sensory virtual experiences.

Over the next 2-3 years Forest of Avon seeks to develop a new section of the Forest of Avon Plan, setting out current activity and future goals for engaging people, addressing tree equity and increasing the benefits from trees and woodland. All this will be measured clearly.

Other examples of community engagement:

- The Emergency Tree Fund from Woodland Trust to Forest of Avon and working with the Natural History Consortium enabled the development of toolkits for increased accessible activity.
- A key partner, Avon Needs Trees, is delivering a successful woodland skills courses at our shared site: Great Avon Wood.
- Our Forest of Avon expert-led nature and health programme is delivering a South Gloucestershire dementia group as well as groups with Bristol Dementia Wellbeing Service, and Forest Fridays are run alongside Second Step and Bristol Mental Health.
- The Western Forest team (hosted by Forest of Avon) is working with the Natural History Consortium in developing a Generation Forest programme of skills, access, volunteering and health.



Case studies

Partnership in the Chew Valley

Great Avon Wood is a top Flagship Project of the Plan. Funded by Forest of Avon's Trees for Climate fund backed by Defra, West of England Combined Authority, National Heritage Lottery Fund, Woodland Trust and others, Avon Needs Trees and the Forest of Avon secured this site in 2022. The project focuses on woodland creation through natural regeneration and low-input methods. It supports climate action, biodiversity and community involvement, with over 2,500 volunteer days logged by July 2025, including events like the Festival of Nature Bioblitz.

Research on biodegradable tree guards is ongoing, and the site enhances existing meadows, streams, and woodlands. It will also help reduce flood risk by slowing runoff into the River Chew.

[Avon Needs Trees: Great Avon Wood](#)

[Woodland Trust: Tree Guards: Research into plastic free alternatives](#)



Expanding local food and wildlife at Bath City Farm

Bath City Farm is a 37-acre working farm, visitor attraction, and charity overlooking Bath. It offers education, training, and therapeutic activities while enhancing wildlife and local food production. With support from Trees for Climate, the farm created a community orchard in 2022 and a nuttery in 2023, planting hazel, almonds, and pecans. Volunteers planted and protected the trees, and Bath City Farm plans to host pollinator planting, seasonal volunteering, and

ongoing events - restoring orchards and nutturies as central community spaces. Management and habitat enhancements will support biodiversity, benefiting bats, birds, butterflies, and mammals such as the hazel dormouse.

[Forest of Avon: Bath City Farm](#)

[Bath City Farm](#)



Woodland Management at The Retreat

The Retreat, a community woodland near Upton Cheyney and managed by the Forest of Avon, has seen significant work. Alongside annual ride mowing, litter collection, and safety tasks, volunteers helped create three new coppice coupes to boost diversity and encourage new ground flora. The team also thinned the largest compartment on site, identifying a promising disease-resistant ash now under monitoring. A pond, scraped two years ago, is thriving with early floral colonisation. As the woodland

marks its 25th anniversary since planting, an exciting programme of events is being planned for staff and volunteers to celebrate its growth and resilience.

[Forest of Avon: The Retreat](#)

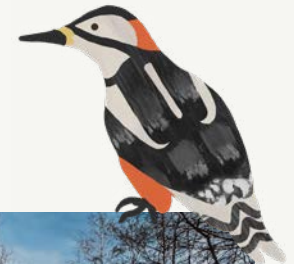
Woodland Wellbeing for Heart Patients

After a cardiac event, many people face anxiety, depression, and isolation. To address this, the Forest of Avon and local NHS trusts piloted a six-week woodland wellbeing programme project for people who have experienced a cardiac event. Heart patients joined woodland walks, crafts, and relaxation activities, supported by clinicians and our health and nature practitioners. Participants described the woods as calming and confidence-building, with friendships continuing beyond the sessions, and one participant noting, “We sat

around the campfire... we became a team.” A £15,000 grant from The Health Lottery Foundation will now extend the project into 2025–26, reaching more patients in South Gloucestershire, North Bristol, and Weston-super-Mare.

[Forest of Avon: £15,000 secured to extend woodland wellbeing project for heart patients](#)

[Forest of Avon: Helping everyone benefit from nature](#)





Funding and finance

There is an opportunity to create a strong, mutually beneficial relationship with businesses and funders, encouraging them to invest in caring for and expanding the forest.

The benefits of this two-way exchange are tangible and will be shared by every community and business involved.

For every £1 invested in England's Community Forest activity, communities see an £8 return.

The Forest of Avon partnership has been successful in raising funding to support trees and woodlands. The return on investment is substantial: research from England's Community Forests Trees for Climate programme shows an £8 return for every £1 invested.

Delivery partners seek to bring in funding from a wide range of ever-growing sources and with a fast pace of change. Some funding approaches are being trialled, and we aim to

share knowledge and experience across the partnership. This enables the swift replication of successful methods while capturing lessons learned and identifying challenges and risks. A key risk is reliance upon one source of funding or heavy reliance upon one source of any type of funding for any particular programme of work or objectives.

Trees for Climate is a programme of Defra funding delivered by England's Community Forests since 2020. It has been a substantial resource enabling woodland creation and land acquisition for new woodland, whilst also enabling high levels of match-funding and value in kind.

Funding into the partnership for woodland creation has also come from other Government funding for trees and woodlands: the Woodland Trust, crowdfunding, private investment (including finance from banks), grants and foundations. Models that have been trialled include the carbon market and biodiversity net gain (BNG).

The Forest of Avon continues to expand its fundraising capacity, and the Western Forest will support larger scale funding efforts across the region, working with the two Community Forests in the region (Forest of Avon and Great Western Community Forest).

Monitoring and evaluation

In 2026, the Forest of Avon will review the impact of the Forest of Avon Plan implementation since 2021.

England's Community Forests currently work with Liverpool John Moore's University (LJMU) to bring together data on Trees for Climate performance and Nature Based Solutions for each year of the programme. A social value tool is also being developed.

Together over the next 5 years we can bring a more robust and comprehensive approach to data and evaluation, sharing and benefitting from learning across the sector.

LJMU support England's Community Forests with a variety of data points, including Natural Capital, Natural Flood Management (hectares established in areas of high potential - the Environment Agency's spatial prioritisation), public access (households within 500m of accessible woodland), enhancing wildlife (hectares of ecological network for woodland

species added), contribution to net zero (increase in carbon sequestration capacity) and ecosystem service assessment (net change in ecosystem service capacity for: air purification; flood mitigation; local cooling; noise regulation).

As well as substantial consultation with stakeholders in 2021, partners have completed a range of exercises to gauge public views including the Local Nature Recovery Strategy (LNRS) consultation, Council consultations on tree strategies, Emergency Tree Fund workshops, events and engagement with landscape areas which include protected characteristics. From this information, toolkits have been produced, and more resource will be brought into the People element of work over the next 2-3 years. Further work will be developed over the next 5 years.



Next steps



Next steps

We have a vision to 2050 with Government-set targets and the aspiration of the Forest of Avon partners.

The next five-year Action Plan must outline the steps for delivery, aligned with each Local Authority's individual targets, to achieve our collective ambition.

The next five-year Action Plan must outline the steps to achieve our collective ambition.

We also plan to undertake the following work over the next 2-3 years:

- Agreeing further detail relating to timber production and Forestry Commission principles.
- Urban trees and trees in developments - how we can do more to support these important trees.
- People - developing the Tree and Woodland Culture, to discover what people already gain and what they want from their Forest.
- Developing the Forest of Avon Plan to inform the Western Forest strategic plans and drawing on Western Forest regional plans to accelerate activity.
- Diversifying income streams and securing the right level of Trees for Climate funding to deliver on targets to 2030.



Priorities for your area

1. Clevedon, Portishead and Gordano
2. Weston-Super-Mare and Environs
3. North Somerset Shoreline and Moors
4. Woodland and Parkland Uplands Abbots Leigh, Tickenham and Failand
5. North Somerset Open Plateau, Wooded Slopes
6. Mendip Slopes, Lox Yeo Vale and Bleadon Hill
7. Chew Valley
8. Yeo Valley and Spring Line Villages
9. Nailsea, Backwell, Long Ashton and Environs
10. Dundry Hill
11. Cam, Wellow and Somer Valleys around Norton Radstock
12. Severn Estuary Shoreline and Levels
13. Bath and Environs (Bathscape)
14. Cotswold Scarp and Dip Slope
15. Ridges Landscape from Shirehampton to Tytherington
16. Pucklechurch Ridge, Boyd and Golden Valleys
17. Frome Valley, Westerleigh Vale and Oldland Ridge
18. The South Gloucestershire Vales
19. Greater Bristol
20. Keynsham and Environs
21. Settled Undulating Plateau Newton St Loe to Hinton Blewitt
22. River Avon and Other Riparian Habitats

For more information about your area's priorities, go to [Tree and Woodland Priorities by Landscape Area](#)

